



Funeral Directors
ASSOCIATION OF NZ

MEMBER

Lamb & Hayward
FUNERAL DIRECTORS



Rimu Foil Raised Lid Gloss*
\$2,990

Rimu Foil Gloss Urn*
\$259



Rimu Veneer Raised Lid

\$3,800



Rimu Veneer Urn

\$339



Rosewood Urn

\$259



Rosewood Raised Lid

\$2,990



Rosewood Flat Lid

\$2,490



Rimu Foil Matte Urn*
\$259



Light Oak Urn
\$259



Rimu Foil Flat Lid*
\$2,320



Light Oak Flat Lid
\$2,550

*Grain and colour may vary from supplier
All prices include GST

Traditional

Oxford Solid Raised Lid

Mahogany Gloss Finish

\$4,890



Solid Timber Ashley Urn
Rosewood

\$499



Natural Macrocarpa

Solid Timber Oil Finish

\$3,650



Solid Timber Macrocarpa Urn

\$499



Pioneer Rimu Solid

\$6,380



**Solid Timber Ashley Urn
Rimu**

\$499



Recycled Rimu Solid

Solid Timber Oil Finish

\$4,130



Recycled Rimu Urn

Solid Timber Oil Finish

\$499



All prices include GST

Premium

A True Eco Friendly Timber Casket

Hand crafted by quality tradesmen. Our eco-friendly, *Eco Caskets* are made with water based glues, minimal use of screws and pins and locally sourced timber, grown sustainably here in New Zealand, to reduce the carbon footprint and impact on the environment.

Eco Caskets feature a natural finish, solid pine construction on the lid and sides and a plywood bottom for a sturdy base.

Choose from natural finish, solid pine, wooden handles or natural fibre rope handles.



Eco Solid Pine Casket

Available with wooden or rope handles.

\$3,120



Solid Pine Urn

\$349



Willow, fast growing and eco-friendly

This fast growing, sustainable material benefits from regular cropping. Willow absorbs, and locks in carbon dioxide during growth. When buried the CO2 remains locked in. If cremated, only the same quantity is released back into the environment - making it 'Carbon-Neutral.'

Willow Urn

\$99



Willow Casket

\$2,820



Woollen Casket (includes complimentary woollen blanket and nameplates)

Grey, White

\$3,450

New Zealand Wool Blend

Made from New Zealand Wool Blend- 3 fleeces per casket, biodegradable and environmentally friendly. Woollen caskets are supported on a strong recycled cardboard frame and strongly reinforced with jute. The interior is generously lined with organic cotton and attractively edged with jute. The waterproof base is also biodegradable. All the materials used are readily biodegradable and suitable for cremation and burial.

Included are two personalised embroidered woollen name plates and a woollen blanket.



Woollen Urn

With personalised embroidered name plate
Grey, White **\$549**

**Solid Rosewood
Stafford Couch**

\$8,490



All prices include GST

Couch

Custom Casket



Our custom caskets can be painted in any available Resene colour. Please allow an additional 48 hours.

Custom Raised Lid

White, Blue

\$3,060

Custom Colour

\$3,140



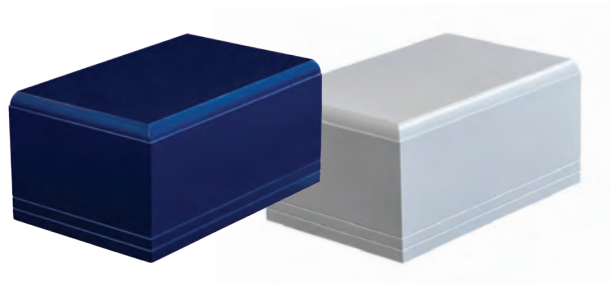
Urn

White, Blue

\$259

Custom Colour

\$379



Custom Flat Lid

Blue, White

\$2,630

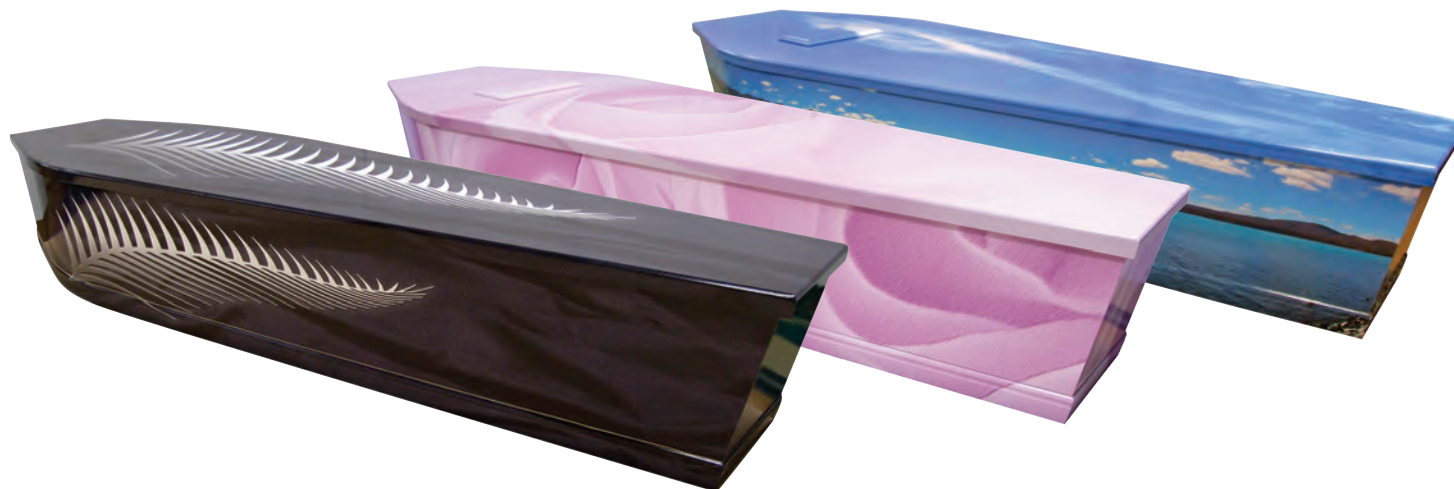
Custom Colour

\$2,790

Picture Caskets

Available in a wide range of pre existing designs.

\$3,950



Personalised Picture Caskets

Customise your casket using your own photographs. Simply supply up to 4 photos, to be printed directly onto the casket.

Examples shown are of a Lamb & Hayward picture casket, produced for John Rodgers, a passionate speedboat racer and motorsport enthusiast, formerly of Amberley.

\$3,950



The Langston

\$2,800

Rimu
Foil

Rosewood

Light Oak



Wooden Urn

\$259



The Kingsford

\$2,800



Light Oak



Rosewood



Rimu
Foil



Wooden Urn

\$259

All prices include GST

The Hillary Range

Shaped Customwood

\$1,750



Marker Cross

\$85



Grave Marker

\$65



Standard Urn

For every funeral arranged by Lamb & Hayward, a native plant is established at Ōtukaikino - Living Memorial, a place of commemoration for family and friends to visit.

Since 1992, Lamb & Hayward and the Department of Conservation (DOC) have worked in partnership to develop Ōtukaikino-Living Memorial.

Ōtukaikino at 985 Main North Road, Belfast, is a 13 ha DOC Reserve with significant cultural and ecological values and is one of the few remaining original freshwater wetlands.



Ōtukaikino Reserve
The Living Memorial